

WATERHOUSE & DODD

NEW YORK | LONDON



Allen Jones - *Swoon*, 1994, oil on canvas, 48 x 50 in.

[MORE DETAILS](#)

MODERN MASTERS

Waterhouse & Dodd are dealers
in Impressionist, Modern and Contemporary art
in New York and London.

We have sold more than 5,000 works of art since 1987.
We buy art and also take works on consignment for sale.

*Please also see details of our art advisory service,
Fine Art Brokers, on page 25.*



Gino Severini - *Un mosaico - Madonna con bambino & sant'Antonio de Padova*, 1955,
gouache on board, 16 x 24 in.

[MORE DETAILS](#)

An Exhibition of Paintings, Drawings and Sculpture by Modern Masters

Currently the exhibition is online only

*Please click on any image in this catalogue
for further information*

Please contact us to discuss Viewing by Appointment

212 717 9100 | newyork@waterhousedodd.com

15 East 76th Street
New York, NY 10021

www.waterhousedodd.com



Milton Avery - *Burned Hill by the Sea*, 1938, watercolor on paper, 22 x 30 in.

[MORE DETAILS](#)



Milton Avery - *Woman in Blue*, 1935, oil on canvas, 36 x 28 in.

[MORE DETAILS](#)



Henri Matisse - *Corbeille d'ananas et fruits*, 1926, charcoal on paper, 19 x 24.5 in.

[MORE DETAILS](#)



William Scott - *Still Life*, 1956, oil on canvas, 24 x 36 in.

[MORE DETAILS](#)



Fernand Léger - *Deauville la sieste*, 1950, mixed media on paper, 11 x 15 in.

[MORE DETAILS](#)



Salvador Dalí - *Chocolat*, 1966, watercolor and ink on paper, 15 x 11 in.

MORE DETAILS



Jean-Paul Riopelle - *Sans titre*, 1956, gouache on paper, 23.5 x 47 in.

[MORE DETAILS](#)



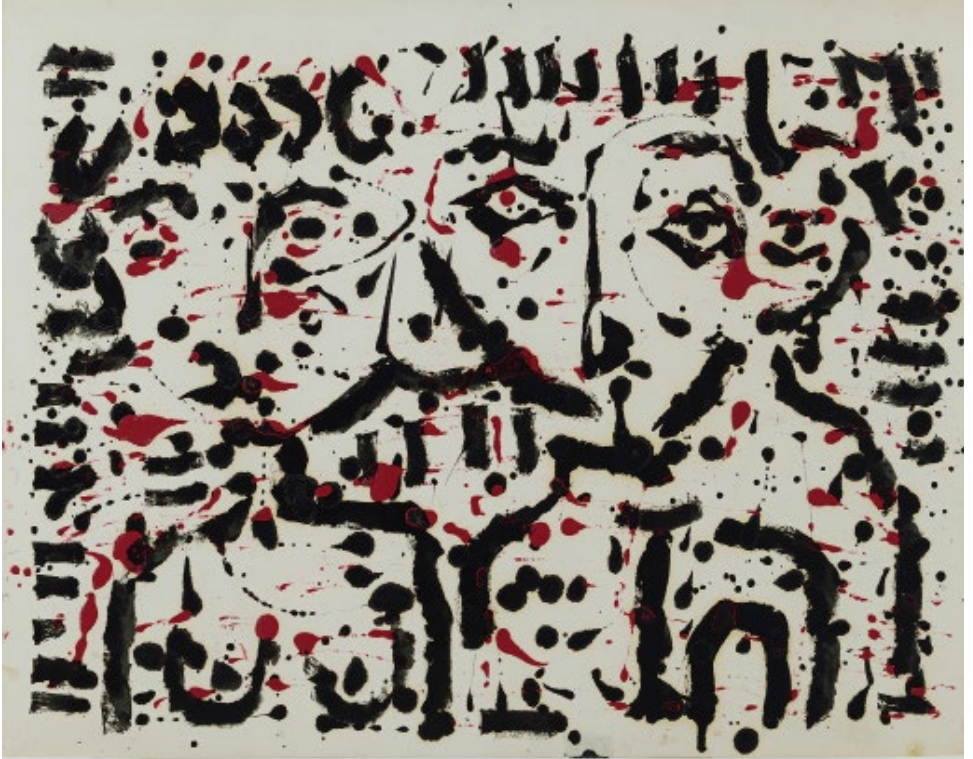
Willem de Kooning - *Pink Woman*, 1964, oil & pastel laid on board, 10 x 11 in.

[MORE DETAILS](#)



Frank Stella - *Ifafa I*, 1967, unique, collage on paper, 15 x 22 in.

[MORE DETAILS](#)



Kenneth Noland - *Untitled Abstract*, 1951, ink & enamel on paper, 16 x 20 in.

[MORE DETAILS](#)



Philippe Hiquily - *La Reorneadora*, 2006, edition 8/8, weathering steel mobile, 48 x 17 x 28 in.

[MORE DETAILS](#)



Augustín Cárdenas - *Totem*, 1956-58,
1/8, bronze, 46 x 3.5 in.



Detail

[MORE DETAILS](#)



Wilhelmina Barns-Graham - *Aerial*, 1967-70, oil & acrylic on board, 24 x 24 in.

[MORE DETAILS](#)



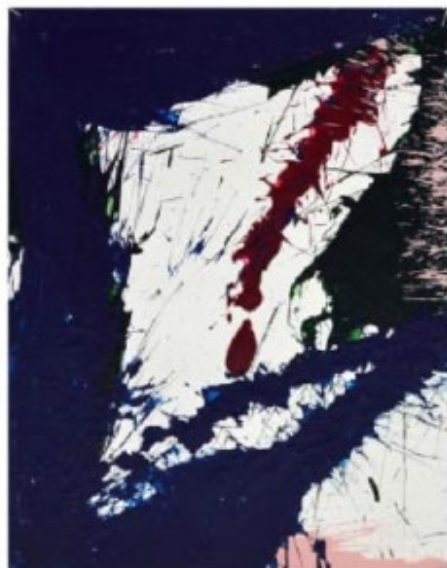
Dennis Creffield - *Figure Composition*, 1981, oil on board, 36 x 50 in

[MORE DETAILS](#)



Michael Goldberg - *Abstract Composition*, acrylic on card, 10.5 x 8.5 in.

[MORE DETAILS](#)



Norman Bluhm - *Composition in Blue and Pink*, 1967, gouache on paper laid on canvas, each 12 x 9 in., a set of 4

MORE DETAILS

Marino Marini -
Cavallo e Cavaliere, 1945,
mixed media on card, 15 x 11 in.

MORE DETAILS



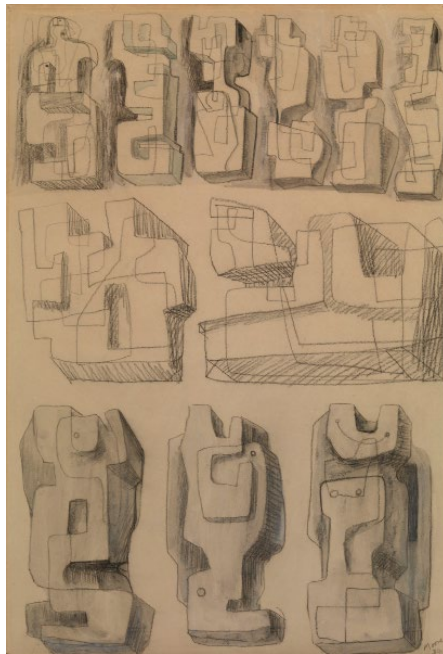
MORE DETAILS

Marino Marini - *Cavallo*, 1954,
gouache on paper laid on canvas,
15 x 11 in.



Henry Moore - *Madonna and Child Studies*, 1943,
mixed media on paper, 7 x 7 in.

[MORE DETAILS](#)



Henry Moore - *Square Forms*, 1936,
mixed media on paper, 22 x 15 in.

[MORE DETAILS](#)



Georges Folmer - *Profil et masque*, c. 1928, oil on canvas, 22 x 18 in.

[MORE DETAILS](#)



Angel Zarraga - *Composition cubiste*, c. 1913, oil on canvas, 29.5 x 25 in.

[MORE DETAILS](#)



Keith Haring - *Subway Drawing*, 1983, chalk on paper; 40 × 30 in.

[MORE DETAILS](#)

Who We Are

An international art advisory company offering comprehensive services for buying & selling fine art.

FREDERIC EDWIN CHURCH, *Above the Clouds of Summit*, 1848. Acquired by Fine Art Brokers from a private US museum for an important collection.

Our
Services



Buying Art



Selling Art



Auction Services



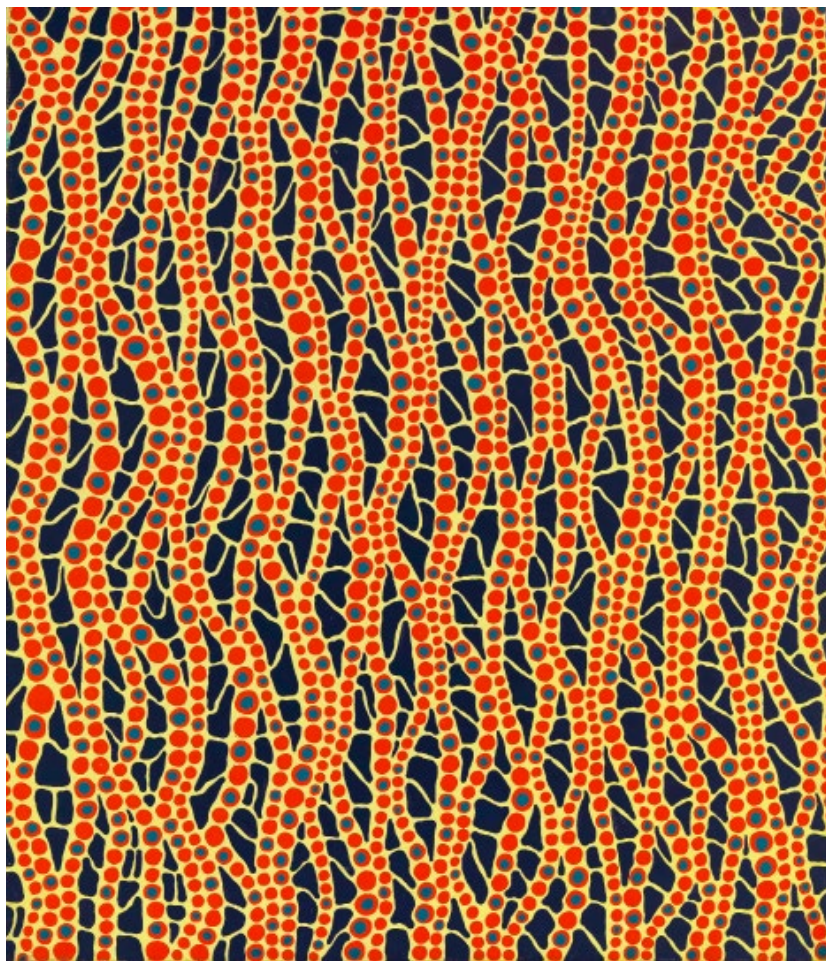
Collections & Estates

We recently launched a new website for Fine Art Brokers, our sister business. Ray Waterhouse and Jonathan Dodd formed this specialist art advisory and broking company in 1996 in response to clients who wanted help buying and selling art outside the gallery's usual range of style, period or price.

Our team of experts utilize our office and gallery spaces in New York, London and Paris to provide the inside track on the art market to private collectors and fiduciaries. With our global contacts and knowledge of trends and value we help clients to acquire art they might not have access to and at fair prices. These include pieces as unrelated as portraits of Henry VIII, Contemporary art from \$30,000 and Post-Impressionist and Hudson River School paintings for more than \$20million. We also arrange and negotiate private sales.

Most art advisors claim to provide objective advice; Fine Art Brokers does not. We use our actual experience of buying and selling thousands of artworks to offer practical and strategic advice. We offer a no deal, no fee approach and our commissions are surprisingly low. Please call or email to discuss how we might be able to help.





Yayoi Kusama - *Passage of the Wind*, 1988, acrylic on canvas, 21 x 18 in.

[MORE DETAILS](#)

www.waterhousedodd.com